



## **INTERNATIONAL SCIENTIFIC PROGRAMS AND PROJECTS**

Co-funded by the  
Erasmus+ Programme  
of the European Union





The Erasmus + program is a new program of the European Union aimed at supporting cooperation in the field of education, vocational training, youth and sports for the period from 2014 to 2020.

- The objectives of the Program are to create a new quality of cooperation, including:
  - use, dissemination and development of previously achieved results
  - promotion of new ideas and attraction of new participants from the sphere of labor and civil society
  - creation and development of new forms of cooperation





- Erasmus + covers the member countries of the European Union, as well as partner countries from 13 geographic regions, incl. Russia and China.



Erasmus + has identified the following main areas:

**Key Action 1:** *Learning Mobility of Individuals - new mobility opportunities for students and teachers*

**Key Action 2:** *Cooperation for innovation and good practice - cooperation for developing university capacity and sharing best practices*

as well as **Jean Monnet Activities** - wide opportunities for the development of European studies under the Jean Monnet subprogram.

Since its foundation, DAAD has supported more than 1.9 million of both German and foreign scientists. Organization in form is an alliance of German higher education institutions and student associations. Currently, DAAD brings together 238 German participating universities and 107 student organizations and is an intermediary in the organization of foreign cultural policy, as well as the policy of higher education and science in Germany.

# DAAD

Deutscher Akademischer Austausch Dienst  
German Academic Exchange Service





# Scholarships for the best!

DAAD provides both German and foreign youth with the opportunity to gain experience in study and research abroad / in Germany. Most of the scholarships (from about 100,000 a year around the world) are awarded to graduate and postgraduate students.



DAAD Regional Office New Delhi



DAAD Information Centre Toronto



## Departments Abroad

The DAAD network includes 15 foreign branches and 56 information centers around the world. The budget is mainly formed from the funds allocated by various ministries of Germany, primarily the Ministry of Foreign Affairs, the European Union, enterprises, organizations, foreign governments. In Bonn there is the Central Office of DAAD, in addition there is a bureau in Berlin.

- The European Forest Institute is an international organisation, established by European States.
- 28 European States have ratified the Convention on EFI.
- Have 110 Associate and Affiliate Member organisations in 37 countries.
- Headquarters is in Joensuu, Finland, and offices in Austria, Belgium, Croatia, France, Germany, Spain and Sweden, as well as project offices in Malaysia and China.



## Main objectives of the activity:

- - the creation of a pan-European policy and the consolidation of knowledge in modern forest science in Europe, the identification of strategic directions for scientific research related to forests;
- - In the framework of integrated and interdisciplinary research on new areas related to European forests, EFI plays a role as an international organization that provides evidence-based policy advice;
- - supporting coordination and strengthening of the scientific research infrastructure in the field of forestry on the basis of common European interests;
- - Realization of strategic researches with the help of teams from the staff of their own employees, as well as involving experts, including from the network of associative members;
- -provision of scientific knowledge and scientifically-grounded information of politicians and other interested persons.





- The Fulbright Program is a program of educational grants, founded in 1946 by a former US Arkansas senator, James William Fulbright, and funded by the State Department, in order to strengthen cultural and academic ties between US citizens and other countries.



The Fulbright Program is one of the most prestigious awards programs in the world among similar ones, it operates in more than 155 countries, 50 of which have special commissions running the program, where they do not exist, it is supervised by the Information and Culture Department the US embassy.



# Fulbright Program for China

- Chinese Visiting Research Scholars Program
- Chinese Ph.D.
- Chinese Foreign Language Teaching Assistants (FLTA) Program
- Other Fulbright Opportunities for Chinese Citizens



- The Russian Foundation for Basic Research (RFBR) is a self-governing state non-profit organization in the form of a federal institution under the jurisdiction of the Government of the Russian Federation.
- The purpose of the Foundation is to support scientific research in all areas of fundamental science, to promote the scientific qualification of scientists, to develop scientific contacts, including the support of international scientific cooperation in basic research.
- During its existence, the RFBR supported more than 200 thousand Russian scientists. The share of grant recipients of the RFBR accounts for more than 30% of all articles of Russian scientists in authoritative foreign scientific publications.



- RFBR holds competitions for grants for the implementation of fundamental scientific research by Russian scientists in the following fields of knowledge:
  1. mathematics, computer science and mechanics (01);
  2. Physics and astronomy (02);
  3. Chemistry (03);
  4. biology and medical science (04);
  5. Earth sciences (05);
  6. The science of man and society (06);
  7. information technology and computer systems (07);
  8. Fundamentals of Engineering Sciences (08).

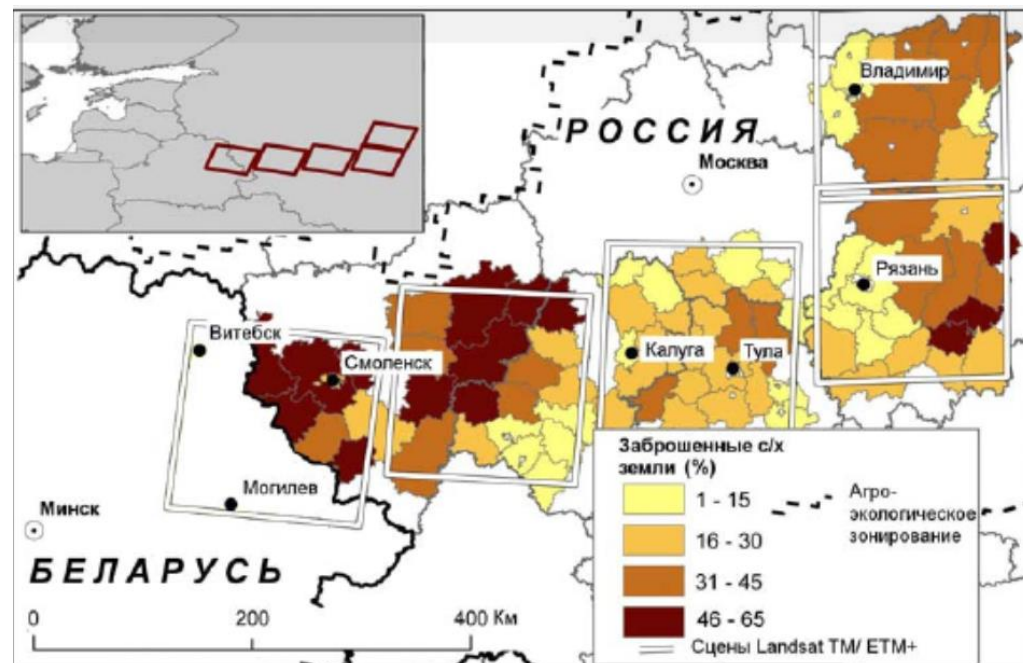


The RFBR also conducts joint international scientific projects.

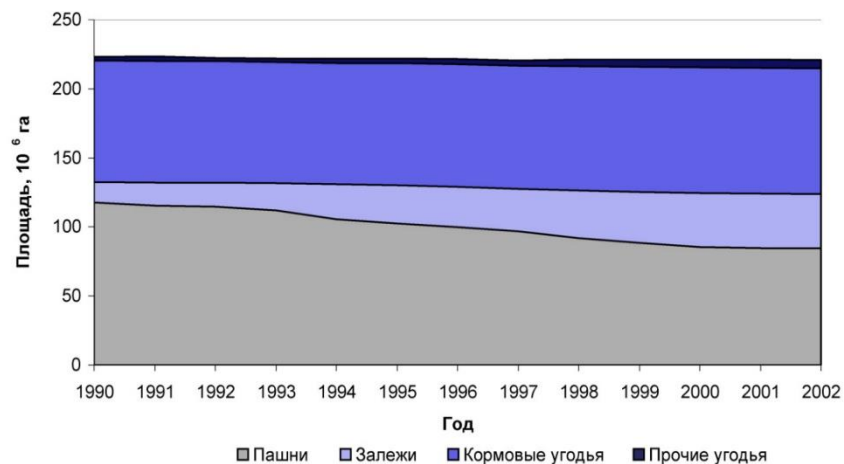
- Fundamental research conducted jointly by the RFBR and the Royal Society of London (1.5 million rubles per year)
- Fundamental research conducted jointly by the RFBR and the Vietnam Academy of Science and Technology (VAST) (0.7-1.5 million rubles / year for 2 years)
- **Fundamental research conducted jointly by the RFBR and the State Natural Science Foundation of China (NSFC) (0.7-1.5 million rubles / year for 2 years)**
- Fundamental research conducted jointly by the Russian Foundation for Basic Research and the National Center for Scientific Research of France (CNRS) (0.7-1.2 million rubles / year for 3 years)
- Fundamental research conducted jointly by the RFBR and the National Research Foundation of the South African Republic (NRF) (1.3 million rubles / year for 3 years)



My personal experience of participating in  
projects jointly implemented by the European  
Union and the Russian Federation



The share of abandoned agricultural land in the European part of the Russian Federation



Dynamics of the areas of agricultural lands of the Russian Federation for 1990-2002.



**Pine trees on the overgrown lands of the Uglich district of the Yaroslavl region**



**Fields of the Klin district of the Moscow region growing birch and pine**



**The growth of deposits of the Orshanka region of the Republic of Mari El with deciduous species**





EUROPEAN FOREST INSTITUTE



# European Forest Institute



Европейский институт леса



# Forest Resources and Information



*Tuula Nuutinen*  
Head of Programme



*Jeannette Eggers*  
Researcher



*Tim Green*  
Researcher



*Katja Gunia*  
Researcher



*Sergey Lezhnin*  
Scholarship Researcher



*Tim Richards*  
Senior Researcher



*Jo Van Brusselen*  
Senior Researcher



*Simo Varis*  
Programmer



*Terhi Vilén*  
Researcher



*Sergey Zudin*  
Senior Programmer



*Elena Zudina*  
Programming Assistant





Graduate students from Spain



Аспиранты из Испании



# Technical University Dresden

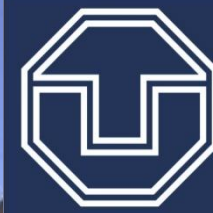


**DAAD**

Deutscher Akademischer Austausch Dienst  
German Academic Exchange Service

Дрезденский технический университет





**TECHNISCHE  
UNIVERSITÄT  
DRESDEN**



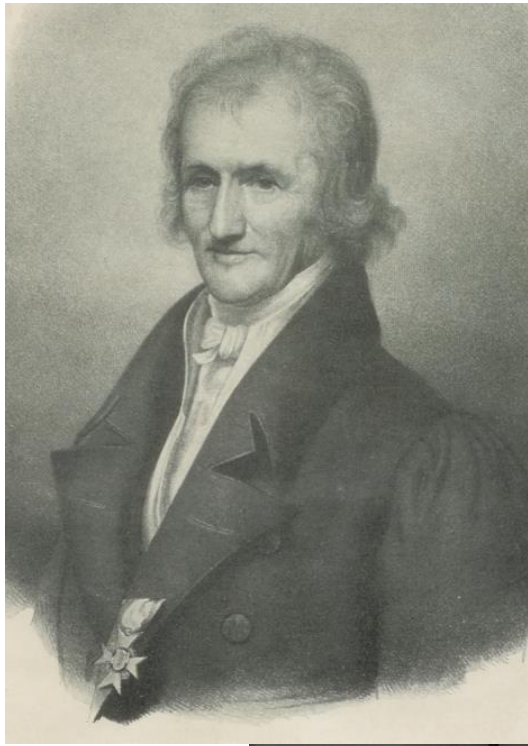


# Tarandt Forest School



Лесная школа Тарандта































ARISTOTLE  
UNIVERSITY OF  
THESSALONIKI

# Laboratory of Forest Management and Remote Sensing of the Aristotle University of Thessaloniki

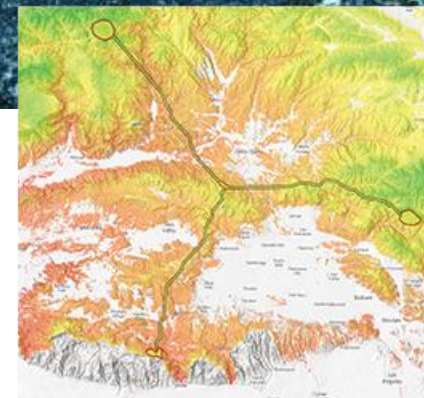
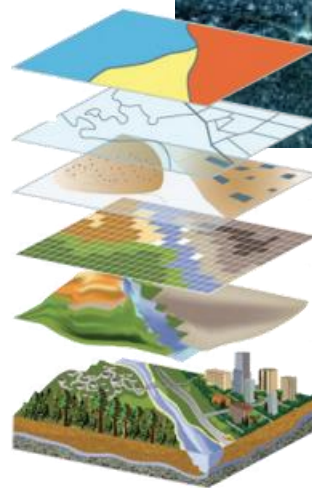
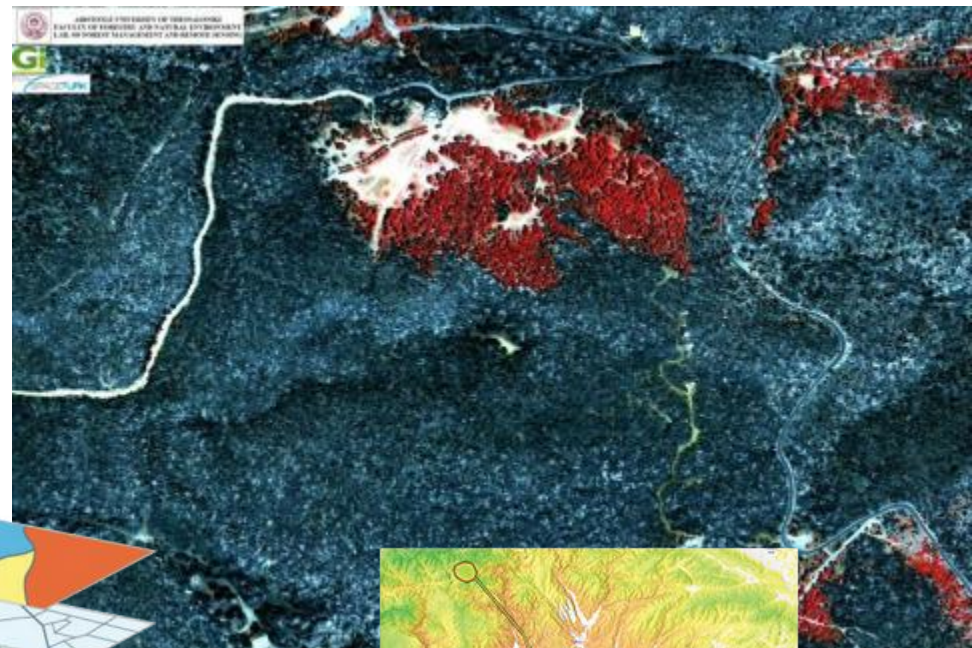


Лаборатория управления лесами и дистанционного  
мониторинга Университета Аристотеля









ArcGIS®



eCognition®



THANK YOU  
FOR YOUR ATTENTION